

EF7905F-64F User's Guide

Suisei Electronics System Co., Ltd
Second edition issued Oct, 2000

1. General Description

EF7905F-64F is a parallel writing unit to use to set to EFP-I.

Reading and writing data to MCU Renesas Technology 7905 group with built-in Flash memory are enabled by using EF7905F-64F.

IC socket for 64-pin 0.65mm pitch SDIP (64P4N-A) is mounted on EF7905F-64F.

<Packing contents>

- 1) EF7905F-64F
- 2) Users guide (this manual)

Fig 1.1 shows the adapter appearance.

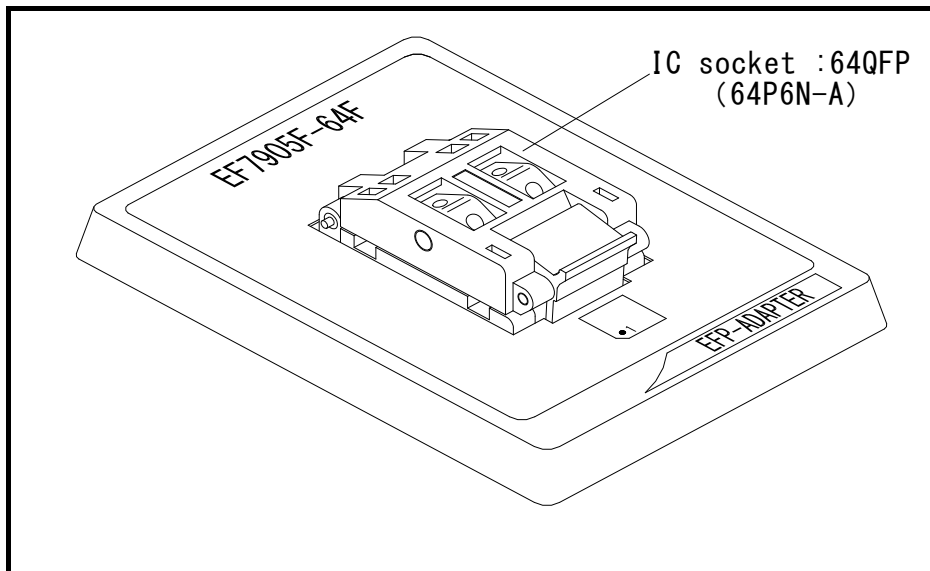


Fig 1.1 EF7905F-64F External Figure

2. Insertion Direction of MCU and cleaning of IC socket

2.1 Insertion Direction of MCU

When MCU is inserted, No.1 pin of the IC socket on EF7905F-64F and MCU's No.1 pin should be connected. The wrong insertion would cause a serious breakage of MCU.

Insertion direction of MCU is shown in Fig.2.1.

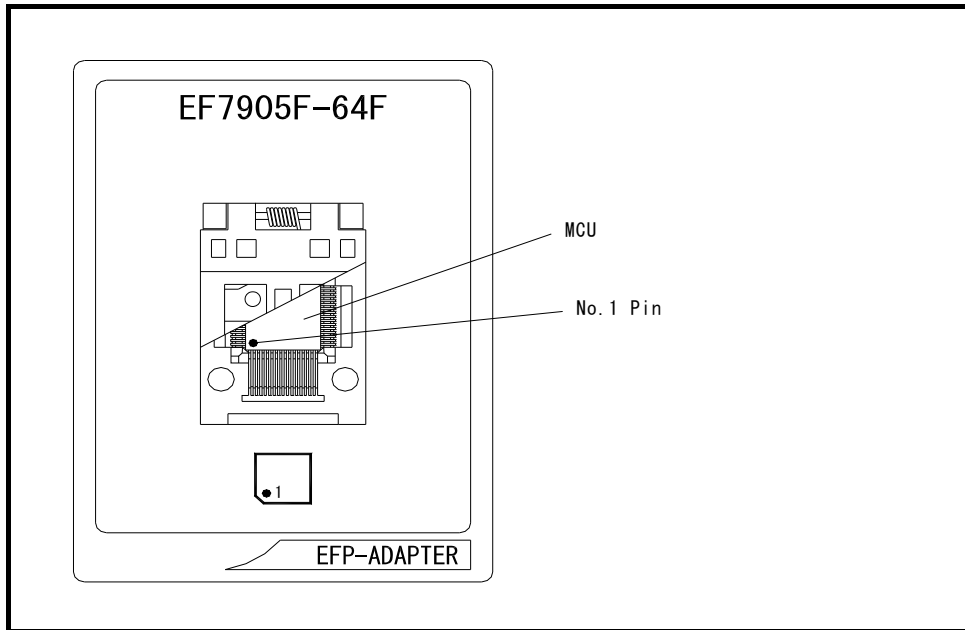


Fig.2.1 Insertion Direction of MCU

2.2 Cleaning of IC Socket

A contact pin inside of the IC socket of the MCU unit might deteriorate and a contact failure might occur because of the number of times used and its age of service. As the contact failure may cause incorrect writing of MCU and malfunction of the writer, please take the below measures.

Though enquiries on contact failures can be made, we regard IC sockets as consumable supplies. We may recommend you to replace them if a contact failure of IC socket occurs due to its use deterioration.

Measures against IC Socket Contact Failure

- (i) Please clean the contact pin surface inside of IC socket with a brush, etc. regularly, depending on the number of times used.
- (ii) If the product is not to be used for a long period, please keep it with less humidity in a plastic bag, etc.

【Recommended item for cleaning】

About the cleaning of the contact pin in the IC socket, we recommend the use of the nanotech brush (Kita Mfg Co., Ltd).

The nanotech brush can remove the dirt which stuck to a contact pin, a very small amount of metastasis of solder. When a contact poor problem occurred, please try it.

About nanotech brush, please ask us or Kita Mfg Co., Ltd (refer to the following site).

Nanotech brush (Kita Mfg Co., Ltd.) http://www.kita-mfg.com/pro_nanotech_e.html

3. List of Corresponding MCU and corresponding version

3.1 Corresponding MCU

A corresponding MCU list of EF7905F-64F is shown in Fig.3.1.

Fig3.1 List of Corresponding MCU

MCU type	Memory type	Corresponding MCU name	Program memory area
M37905Fx (BOOT)	Flash	M37905F8CFP	00000H ~ 01FFFH
M37905F8 (NORMAL)	Flash	M37905F8CFP	00000H ~ 107FFH

3.2 About Software version(S/W)

Please download the latest version up data on the following site when the S/W version.
Please use S/W of the latest version and confirm S/W version regularly.

【S/W version confirmation method】

The version numbers are displayed by [Help]→[About] in the WinEFP or WinEFP2 window menu.

< EFP-I/IM S/W the latest free download site >

http://www.suisei.co.jp/download_e/productdata_efp1_e.html

< EFP-S2 S/W the latest free download site >

http://www.suisei.co.jp/download_e/productdata_s2_e.html

< EFP-S2V S/W the latest free download site >

http://www.suisei.co.jp/download_e/productdata_s2_e.html

Note on Corresponding Versions

Above corresponding versions might change without notice on account of the future capability improvement, etc. Furthermore in case the upgrade procedure manual is attached when this product is purchased, please refer to that manual as a priority.

4. ID Code Area

ID code area is provided in the internal flash memory of 7905 Series MCUs.

Write an optional ID code and its byte into the ID code area. MCUs for which an ID code has been written in the ID code area carry out ID code collation and the MCU's internal flash memory cannot be read, written in or cleared unless the ID code matches.

* Does not include when the ID code area is blank..

ID code area configuration is shown in Fig. 4.1.

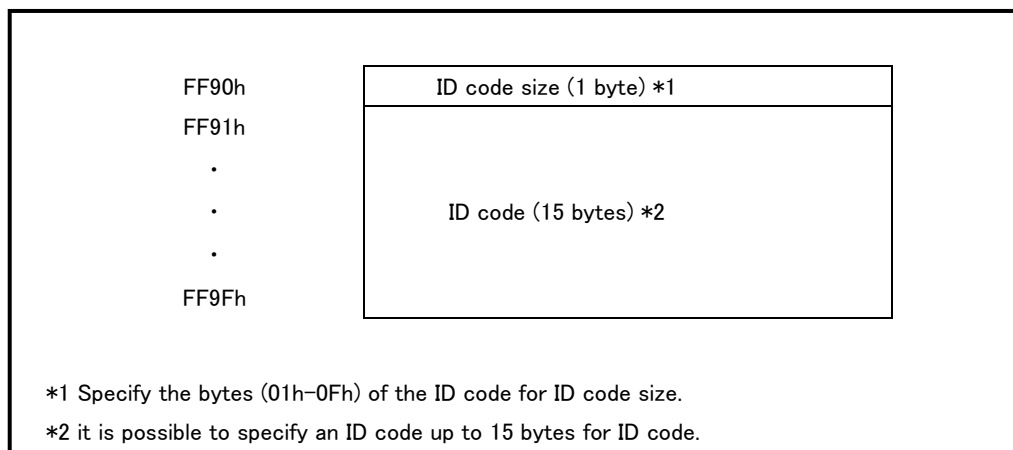


Fig. 4.1: ID Code Area Configuration

5. ID Collation Function

The ID code collation is carried out by inputting the ID code etc. for the ID collation parameter of the WinEFP environment setting dialog. Be sure to carry out the ID code collation if ID has been written in the ID code area of the target MCU.

The commands of [Device] of the WinEFP window menu cannot be used if the ID code does not match.

* If the ID code area is blank, the ID collation is not carried out even if you input the ID code.

The ID collation parameter configuration is shown in Fig. 5.1.

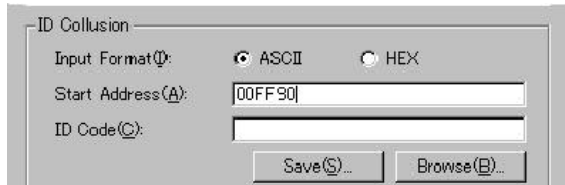


Fig. 5.1: ID Collation Parameter Configuration

(1) Input format

The ID code input format is specified as ASCII or HEX.

(2) Top address

Specify the top address of ID code area.

The top address is fixed at FF90h for the 7906 group.

(3) ID code

Input the ID code.

(4) Save button

Saves input ID collation parameters in a file. When the save button is clicked, the file section dialog appears, so input the file name of your choice.

(5) Refer button

Reads the file in which ID collation parameters are saved and sets parameters according to the contents of the file. When the refer button is clicked, the file section dialog appears, so select the file of your choice.

An example of the operating procedure for ID collation is shown below. The ID code area of the target MCU's internal flash memory is set as follows.

ID code (FF91h-FF96h)	53h, 55h, 49h, 53h, 45h, 49h
ID code size (FF90h)	06h

(1) Check if FF90h is set for the top address parameter. If the device type parameter is set to "M37905Fx", FF90h is automatically set as the top address of the code collation parameter. The ID code will not match if an address other than FF90h is set.

(2) Set ASCII or HEX for the input format parameter, and input an ID code for the ID code parameter. An example of ID code parameter setting is given below.

As the ID code size is calculated automatically, it is not necessary to input into the ID code parameter.

For ASCII:

ID Code: SUISEI

For HEX:

ID Code: 53 55 49 53 45 49
S U I S E I

6. Erase Command

The erase type parameter contained in the erase command enables you to erase by block or erase all blocks. The erase command parameter input dialog is shown in Figure 6.1.

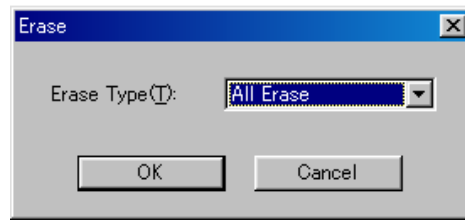


Figure 6.1: Erase Command Parameter Input Dialog

(1) Erase type

All Erase and block address area (xxxxxxh - xxxxxxh) are displayed in the drop-down list to the right of the erase type parameter display field (displayed by clicking the arrow pointing downward with the mouse). Select the block erase method.

(2) OK button

Execute erase command.

(3) Cancel button

Cancel the command.